

IF THIS ADVICE DOES NOT SORT YOUR PROBLEM AND YOU ARE WITHIN THE APPLIANCE TEAM PRESENT AREA, PLEASE CALL THE A TEAM ON 01773 779770 FOR A SERVICE CALL.

CONDENSER TUMBLE DRYER (dryers without a vent hose)

It is imperative on a condenser dryer to clean the filter after every load. Also check the condenser unit periodically every 3-6 months, dependent on use, for blockages.

Examples of typical condenser units, which should be removed for cleaning:



To clean, wash out with hose pipe outside or with shower over bath. If washing out in sink or bath, be careful not to block the drain (u-bend) with the waste fluff that will be washed out from the unit.

Failure to do this quick and easy procedure will decrease the efficiency of the dryer and may cause damage. **Making a hole in your pocket and the environment!**

IMPORTANT: When you refit the condenser unit make sure that it is fitted correctly. It must be inserted the right way up and the right way round and pushed fully back. If clips are fitted to hold in place ensure that they are pushed into 'lock' position. FAILURE TO DO SO WILL CAUSE DAMAGE TO YOUR APPLIANCE.

IF THE MACHINE HAS NO POWER

Most modern machines have a mains light or light up when switched on. If the lights come on, there is power to the appliance and this section does not apply.

IMPORTANT: If you change a fuse, you must use the correct amp for the appliance. If the appliance blows another fuse there must be a fault which is causing the fuses to blow. Do not keep replacing the fuse.

SAFETY PRECAUTIONS: It is advisable to check the condition of your plugs and sockets. Overheating of these items is a FIRE HAZARD. This could also be the cause of your 'no power' fault.

Check if there is a problem with the plug or socket by following the instructions below:

- When pulling out the plug, notice if the plug pulls out freely, as it should do. If it is tight to pull out of the socket, the plug and socket may be overheating.

Always do a visual inspection. If the plug is burning on the pins, as photo below, replace.



Burnt plug pin

- If there is a sign of burning on the socket which you plug the appliance in to, call an electrician to replace and resolve the fault.
- If you replace the plug because there is not a burn sign on the socket and it burns again, get the appliance checked. If the appliance is not faulty call an electrician to check to the socket.

If the above has not helped please continue:

- Check the socket on the wall is working by plugging in a small appliance, i.e. a hairdryer.

If the hairdryer does not run:

- Check if there is an isolation switch (switch spur) above the worktop as this may have been switched off accidentally.
- The isolation switch may also have a fuse fitted that may have blown and need replacing.
- If the switch is on and the fuses are good, please contact a qualified electrician.

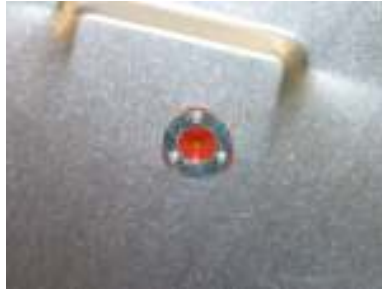
If the hairdryer does run:

- Check fuse in the plug of the dryer and replace with correct amp fuse.
- If plugged into an extension cable, check fuse in extension cable.
- Check that the door on the appliance is fully closed.

Safety note: if using an extension cable with a tumble dryer, it has to be a 13 amp 3 core heavy duty extension and be fully unwound. Do not use extension cables that are wound up. Please note that there are different types of extension cables and it is advisable to make sure that you use the correct one.

NO HEAT FAULT

- Check that there is a reset button on the rear of the tumble-dryer. If there is, press to reset and this may cure your fault. (You may hear a faint click when you press it).



This picture is of a typical reset button, different makes and models may vary. Not all dryers have reset buttons.

HALF HEAT

Check that the half heat button has not been selected.